

- 1
- 2
- 3
- 4
- 5
- 6
- 7
- 8
- 9
- 10
- 11
- 12
- 13
- 14
- 15
- 16
- 17
- 18

SPECIFICATION

- Type E: With eyelet washer

Pin

AISI 303 stainless steel

Washer

Stainless steel AISI 316LHC

Metal injection molded

Ball

Stainless Steel AISI 420C

Compression spring

Stainless steel AISI 631

FEATURES AND APPLICATIONS

Stainless steel locking pins GN 124.3 are used for quick fixing, connecting and locking of various jig and fixture systems.

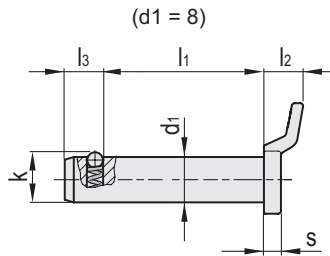
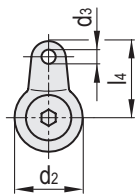
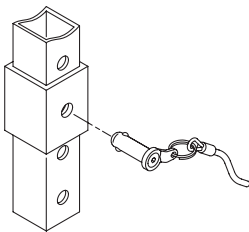
The locking balls are held in position by a compression spring and are therefore not rigidly locked. The pins can be quickly and easily inserted and removed from the locating hole.



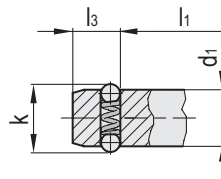
ACCESSORIES

- Ball Chains GN 111 (see page) / GN 111.5
- Stainless Steel Retaining Cables GN 111.2 (see page)
- Spiral Retaining Cables GN 111.4 (see page)

Application example



(d1 = 10 - 12)



Conversion Table

1 mm = 0.039 inch

d1	
mm	inch
8	0.31
10	0.39
12	0.47

Code	Description	d1 -0.04 -0.08	d2	d3	l1	l2	l3	l4	k	s	Mounting hole	Double sided shearing force [KN]#	⚖️
GN.17581	GN 124.3-8-15-E	8	12	2.5	15	7	6.3	13.5	8.7	3	8	40	12
GN.17582	GN 124.3-8-20-E	8	12	2.5	20	7	6.3	13.5	8.7	3	8	40	14
GN.17583	GN 124.3-8-25-E	8	12	2.5	25	7	6.3	13.5	8.7	3	8	40	16
GN.17584	GN 124.3-8-30-E	8	12	2.5	30	7	6.3	13.5	8.7	3	8	40	18
GN.17585	GN 124.3-8-50-E	8	12	2.5	50	7	6.3	13.5	8.7	3	8	40	25
GN.17591	GN 124.3-10-15-E	10	15	2.5	15	7	8.7	15	12	3	10	62	22
GN.17592	GN 124.3-10-20-E	10	15	2.5	20	7	8.7	15	12	3	10	62	25
GN.17593	GN 124.3-10-25-E	10	15	2.5	25	7	8.7	15	12	3	10	62	28
GN.17594	GN 124.3-10-30-E	10	15	2.5	30	7	8.7	15	12	3	10	62	32
GN.17595	GN 124.3-10-50-E	10	15	2.5	50	7	8.7	15	12	3	10	62	41
GN.17596	GN 124.3-12-20-E	12	17	3	20	9	9.5	18.5	14.5	4	12	90	34
GN.17597	GN 124.3-12-30-E	12	17	3	30	9	9.5	18.5	14.5	4	12	90	43
GN.17598	GN 124.3-12-40-E	12	17	3	40	9	9.5	18.5	14.5	4	12	90	52
GN.17599	GN 124.3-12-50-E	12	17	3	50	9	9.5	18.5	14.5	4	12	90	61

Indexing and positioning elements

1 # Breaking strength